



DC Series

MAGNETICALLY COUPLED CENTRIFUGAL PUMPS



FLOJET
a xylem brand

The DC Series magnetically coupled centrifugal pumps



DC 40/10

DC 30/5

DC 15/5

The highest standard in magnetically coupled centrifugal pumps.

The Flojet DC Series are the highest standard in magnetically coupled centrifugal pumps, ideal for chemicals or pure liquids. Their durable polypropylene housing and ceramic spindles allow for maximum chemical resistance. The DC Series is ideal for critical pump applications where leaks must be avoided.

Pump Features and Benefits

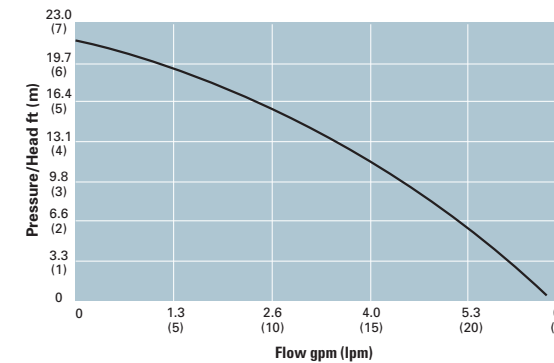
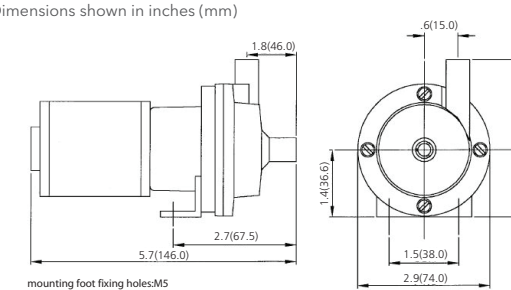
- ✓ Spindle housing designed for higher system pressures on PPS only
- ✓ High purity stainless steel spindles provide wider range of chemical resistance
- ✓ Up to 36.1ft head and 14.5 GPM open flow

DC 15/5

Specifications	
Pump Design	Magnetically Coupled Centrifugal Pump
Open Flow	6.1 GPM (23.0 LPM)
Max Head	21.3ft (6.5m)
Motor Output	25 watts
Amp Draw	4.5 (12V), 2.4 (24V)
Max Specific Gravity*	1.0
Temperature Range	-4°F to +185°F (-20°C to + 85°C)
Dimensions	3.4in H x 5.7in L x 2.9in W (86 mm H x 146 mm L x 74 mm W)
Weight	1.5lb (.7kg)

*Assuming maximum viscosity of 30cp.

Dimensions shown in inches (mm)

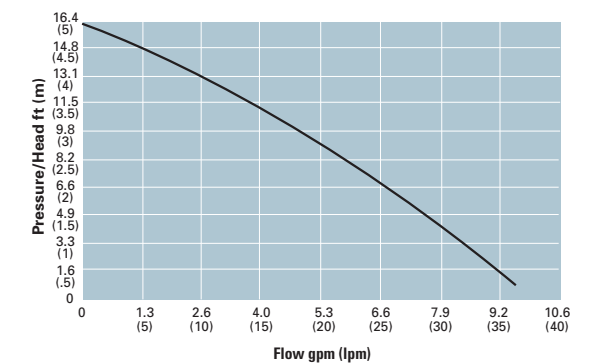
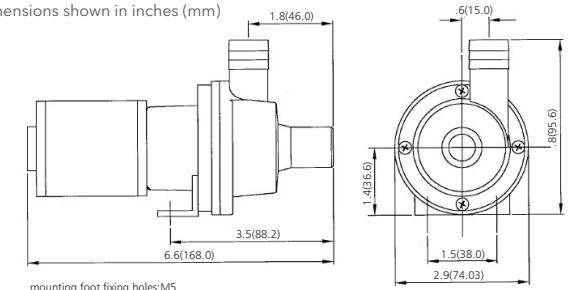


DC 30/5

Specifications	
Pump Design	Magnetically Coupled Centrifugal Pump
Open Flow	9.2 GPM (25LPM)
Max Head	16.4ft (5.0m)
Motor Output	25 watts
Amp Draw	4.5 (12V), 2.4 (24V)
Max Specific Gravity*	1.0
Temperature Range	-4°F to +185°F (-20°C to + 85°C)
Dimensions	3.8in H x 6.6in L x 2.9in W (96mm H x 168mm L x 74mm W)
Weight	1.5 lb (.7 kg)

*Assuming maximum viscosity of 30cp.

Dimensions shown in inches (mm)

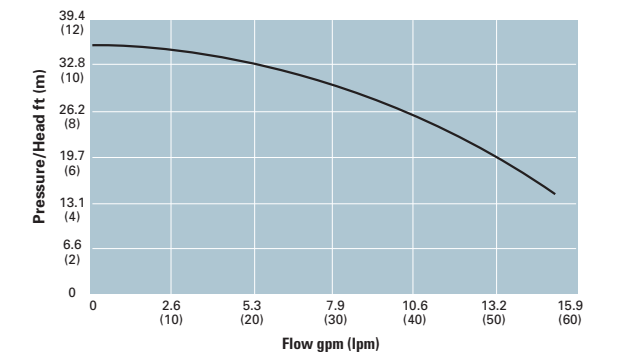
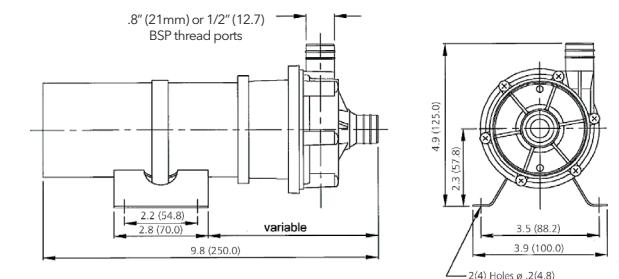


DC 40/10

Specifications	
Pump Design	Magnetically Coupled Centrifugal Pump
Open Flow	14.5 GPM (55 LPM)
Max Head	36.1ft (11m)
Motor Output	65 watts
Amp Draw	12.0 (12V), 6.5 (24V)
Max Specific Gravity*	1.0
Temperature Range	-4°F to +185°F (-20°C to + 85°C)
Dimensions	5.1" x 9.8" x 3.8" (130mm H x 250mm L x 97mm W)
Weight	5.1 lb (2.7 kg)

*Assuming maximum viscosity of 30cp.

Dimensions shown in inches (mm)



Features

- Flows from 6.1 GPM to 14.5 GPM
- Magnetically coupled, seal-less leak free design
- Orientation easily altered to suit installations
- Variable mounting foot positions
- Available in 12 and 24V DC

Wetted Materials

- Standard EPDM 'O' ring
- Strontium ferrite magnet
- Stainless Steel spindle
- Polypropylene housing

Motors

- Brushed DC motors
- Intended for intermittent duty

Model	Port Size	Port Connection	Voltage	Part Number	Description
DC15/5	3/8" by 1/4"	NPT	12	083984	DC15/5 12V DC PP 3/8" By 1/4" NPT EPDM
DC15/5	3/8" by 1/4"	NPT	24	083985	DC15/5 24V DC PP 3/8" By 1/4" NPT EPDM
DC15/5	1/2"	Hose	12	013950	DC15/5 12V DC PP 1/2" HOSE EPDM
DC15/5	1/2"	Hose	24	033944	DC15/5 24V DC PP 1/2" HOSE EPDM
DC30/5	1/2"	NPT	12	083982	DC30/5 12V DC PP 1/2" NPT EPDM
DC30/5	1/2"	NPT	24	083983	DC30/5 24V DC PP 1/2" NPT EPDM
DC30/5	1"	Hose	12	083986	DC30/5 12V DC PP 1" HOSE EPDM
DC30/5	1"	Hose	24	083987	DC30/5 24V DC PP 1" HOSE EPDM
DC40/10	3/4"	NPT	12	226973	DC40/10 12V DC PP 3/4" NPT EPDM
DC40/10	3/4"	NPT	24	226974	DC40/10 24V DC PP 3/4" NPT EPDM
DC40/10	1"	Hose	12	226975	DC40/10 12V DC PP 1" HOSE EPDM
DC40/10	1"	Hose	24	226976	DC40/10 24V DC PP 1" HOSE EPDM

* Pumps not designed to be run dry. In the event of system failure, neglect or misuse pumps can run dry for a limited period of time. Run dry data on all of the Flojet magnetically driven Pumps is available on request.



Warranty: All products of the company are sold and all services of the company are offered subject to the company's warranty and terms and conditions of sale, copies of which will be furnished upon request. The information provided herein is for guidance only, it does not constitute a guarantee of the performance or specification of any individual product or component.

www.xyleminc.com

USA
Xylem, Inc.
Cape Ann Industrial Park
Gloucester, MA 01930
Tel (978) 281-0440
Fax (978) 283-2619

UK
Xylem, Inc.
Bingley Road, Hoddesdon
Hertfordshire EN11 OBU
Tel +44 (0) 1992 450145
Fax +44 (0) 1992 467132

GERMANY
Xylem, Inc.
Oststrasse 28
22844 Norderstedt
Tel +49-40-53 53 73-0
Fax +49-40-53 53 73-11

JAPAN
NHK Jabsco Company Ltd.
3-21-10, Shin-Yokohama
Kohoku-Ku, Yokohama, 222-0033
Tel +81-045-475-8906
Fax +81-045-477-1162

ITALY
Xylem, Inc.
Via Tommaseo, 6
20059 Vimercate, Milano
Tel +39 039 685 2323
Fax +39 039 666 307