

### PRINCIPAL APPLICATIONS

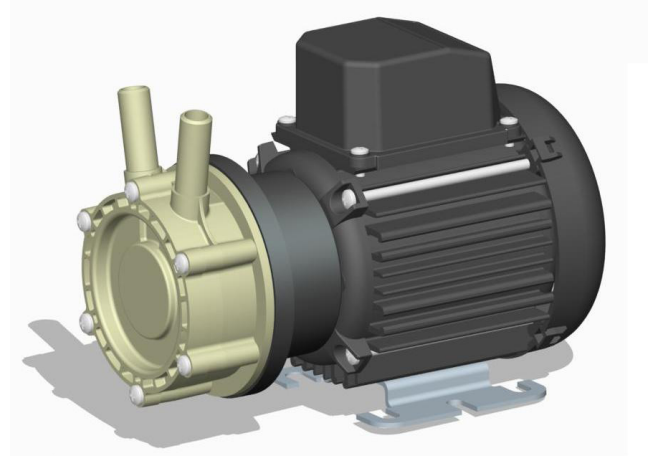
Designed for continuous recirculation of carbonated water, aggressive chemicals, chilled water, pure or precious liquids in high pressure systems.

### WETTED MATERIALS

- PPS Pump Body
- PPS Spindle Housing
- LCP Impeller
- EPDM O rings

### FEATURES

- Manufactured in chemically resistant thermo-plastics
- Operating at an optimum flow rate of 5 litres/minute
- Magnetic coupling provides an energy efficient thermal shield, minimising heat transfer to pumped fluid
- Temperature stability and product purity ensured
- Leak-free continuous operation
- IPX5 motor enclosure
- Low condensation
- Zero maintenance
- Long life



### OPTIONS

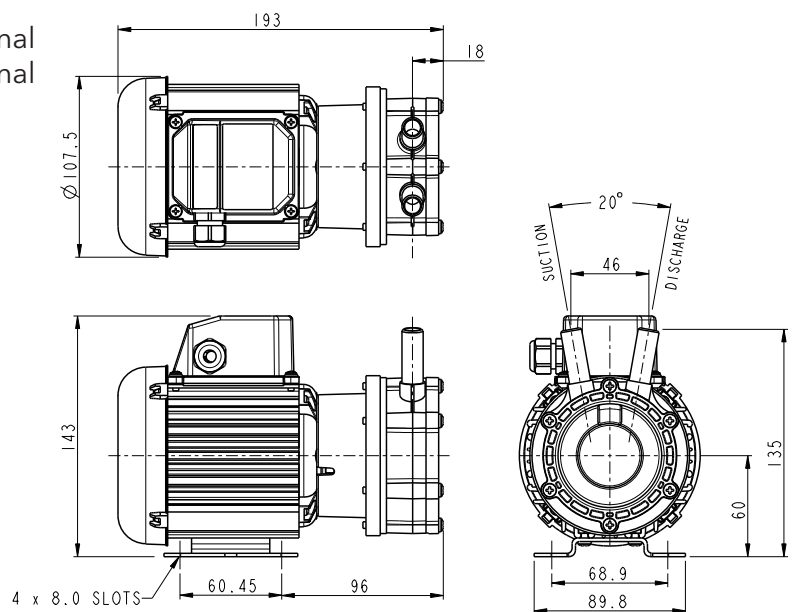
#### HPR10/15

230V 1Ph 50/60 Hz 1/2" standard, 15mm optional  
110V 1Ph 50/60Hz 1/2" standard, 15mm optional

#### Port Details

### DIMENSIONS

Drawings not to scale  
Dimensions in millimetres

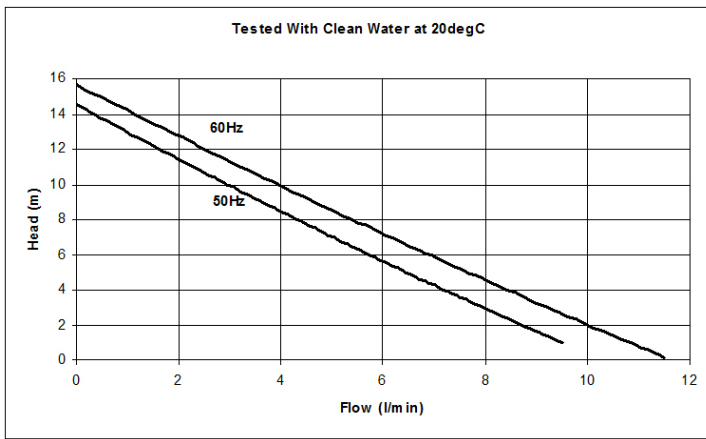


### SPECIFICATION

Model	Overall height (mm)	Overall length (mm)	Overall width (mm)	Weight (kg)	Max body pressure (bar)	Run-out flow rate (l/min)	Closed valve head (m)	Temp range (degC)	*Max specific gravity	Motor output (watts)
HPR10/15	143	193	107	3.1	6	50 Hz 10.1	50 Hz 14.6	-20 to +85	1.0	60
						60 Hz 11.5	60 Hz 15.8			

\*Assuming maximum viscosity of 30cp. Refer to Totton Pumps for higher viscosities and specific gravities

## PERFORMANCE



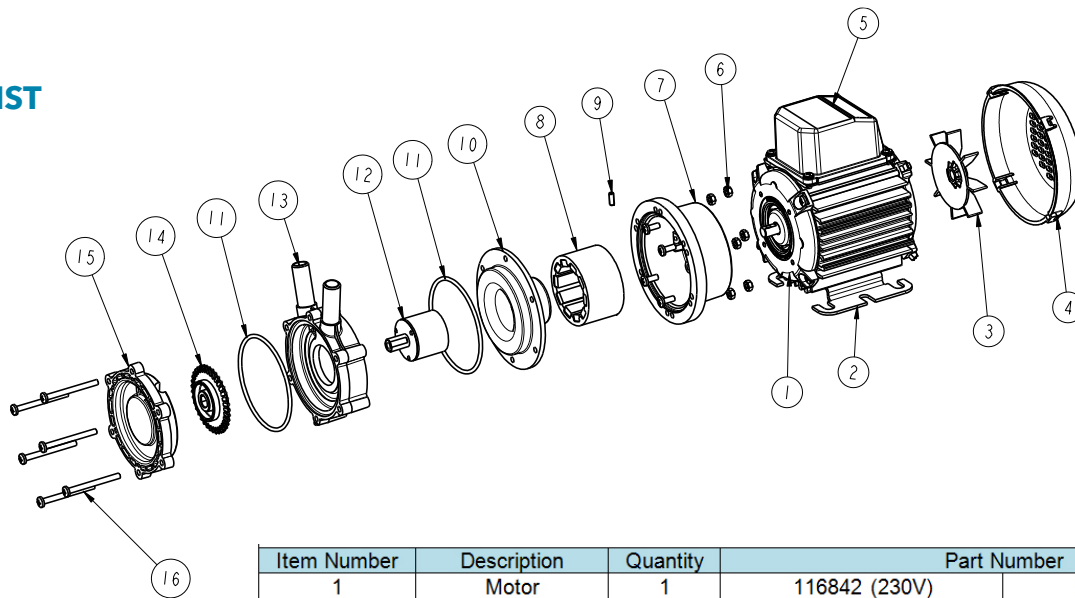
NOTE: These magnetically coupled pumps are designed for use with clean fluids.

Solids will cause jamming. Abrasives will reduce pump life and invalidate the warranty.

HPR pumps are not self priming and are not designed to run dry.

The company reserves the right to change specifications.

## PART LIST



Item Number	Description	Quantity	Part Number	
1	Motor	1	116842 (230V)	116875 (110V)
2	Mounting Foot	1		036330
3	Fan	1		046033
4	Fan Cowl	1		036085
5	Terminal Box	1		036078
6	Nut	6		032105
7	Adaptor	1		036324
8	Drive Magnet	1		006287
9	Grub Screw	1		001406
10	Spindle Housing	1		036389
11	O Ring	2		022845
12	Driven Magnet	1		033291
13	Pump Body	1	043316 ½" ports	043318 15mm ports
14	Impeller	1		033286
15	Front Plate	1		043320
16	Screw	6		022060

**xylem**  
Let's Solve Water

[www.xyleminc.com](http://www.xyleminc.com)

**UK**  
**Xylem**  
Bingley Road, Hoddesdon  
Hertfordshire EN11 0BU  
Tel: +44 (0) 1992 450145  
Fax: +44 (0) 1992 467132

**USA**  
**Xylem**  
100 Cummings Center Drive  
Suite 535-N, Beverly, MA 01915  
Tel: +1 978 281-0440  
Fax: +1 978 283-2619

**ITALY**  
**Xylem**  
Via Tommaseo, 6  
20059 Vimercate, Milano  
Tel: +39 039 685 2323  
Fax: +39 039 666 307

**GERMANY**  
**Xylem**  
Oststrasse 28  
22844 Norderstedt  
Tel: +49-40-53 53 73-0  
Fax: +49-40-53 53 73-11

**JAPAN**  
**Xylem**  
3-21-10, Shin-Yokohama  
Kohoku-Ku, Yokohama, 222-0033  
Tel: +81-045-475-8906  
Fax: +81-045-477-1162

**Warranty:** All products of the company are sold, and all services of the company are offered subject to the company's warranty and terms of sale, copies of which will be furnished upon request. Details correct at time of printing. We reserve the right to change specifications without prior notice.