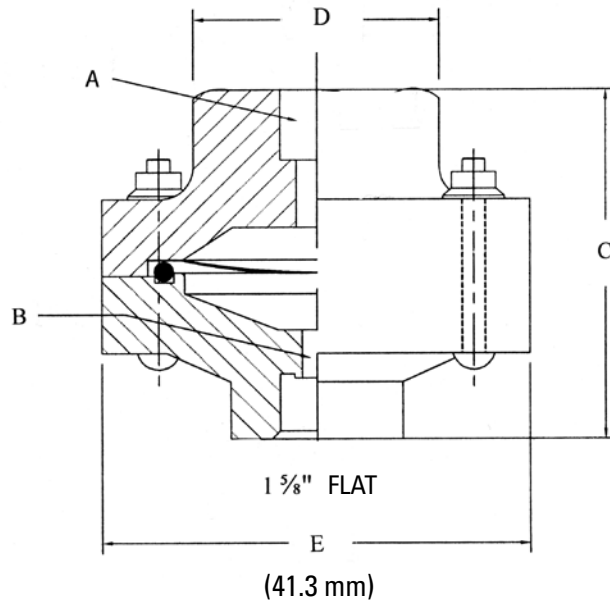


**POLYVINYL CHLORIDE (PVC) DIAPHRAGM SEAL**  
**MODEL 250PVC AND 300PVC-LP**



**Specifications**

Housing:	PVC
Diaphragm:	Model 250PVC: Teflon / 300PVC-LP: Viton
Operation pressure:	250PVC: 30 to 200 psi / 300PVC-LP: vacuum to 30 psi or equivalence
Process connection:	¼ or ½ in nptf standard, other sizes available upon request
Instrument connection:	¼ or ½ in nptf
Compliance:	Diaphragm seal standard ASME B40.2

**Applications**

The PVC diaphragm seal is an economic method used to protect the instrument from clogging or solidification caused by corrosive or viscous process media that can damage the internals of the instrument.

Model	A Instrument connection	B Process connection	Code	C	D	E	Product code
250PVC	¼ in nptf	¼ in nptf	01	2 in (50.8 mm)	1.5 in (38.1 mm)	2.5 in (63 mm)	250PVC-01
		½ in nptf	02				250PVC-02
300PVC-LP -30 in Hg to 60 psi		¼ in nptf	01			3.266 in (82.81 mm)	300PVC-LP01
		½ in nptf	02				300PVC-LP02

Always indicate the type of assembly / filling desired. See page D2 for the right code.