

PRINCIPAL APPLICATIONS

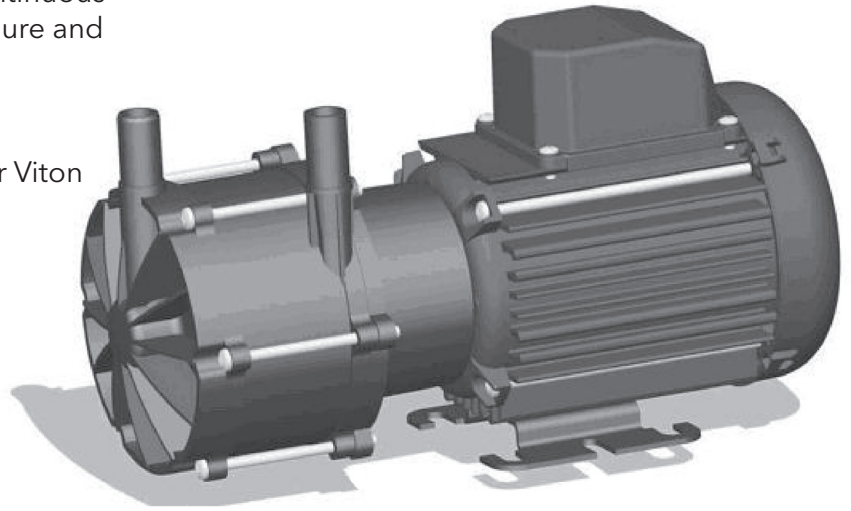
For applications requiring safe, leak-free, continuous flow of aggressive chemicals, acids, alkalis, pure and chilled fluids.

WETTED MATERIALS

- Standard EPDM O Ring, optional Nitrile or Viton
- PPS encapsulated magnet
- PPS spindle housing
- Alumina ceramic spindle
- Graflon loaded PTFE thrust washers

FEATURES

- Manufactured in chemical resistant thermo-plastics –entirely non-metallic
- Multistage versions developed for high head with low flow
- Magnetic couplings provide an energy efficient thermal shield, minimising heat transfer to the pumped fluid
- IPX5 standard motor housing.
- Deep groove ball bearings
- Variable pump body orientation and mounting foot positions



OPTIONS

NEMP20/18

- 230V 1Ph 50Hz
- 230V 1Ph 50Hz
- 230V 1Ph 60Hz
- 230V 1Ph 60Hz

Port Details

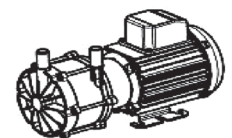
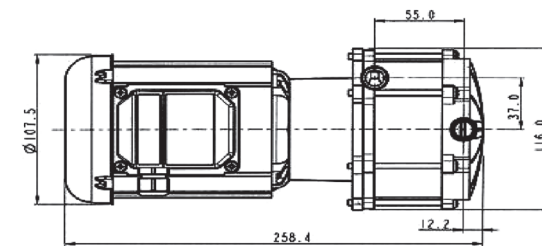
- Plain 15 mm
- 3/8" BSP Male
- Plain 15 mm
- 3/8" BSP Male

NEMP20/18

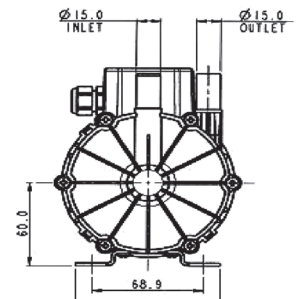
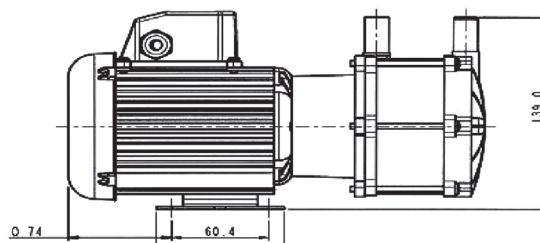
- 110V 1Ph 50Hz
- 110V 1Ph 50Hz
- 110V 1Ph 60Hz
- 110V 1Ph 60Hz

Port Details

- Plain 15 mm
- 3/8" BSP Male
- Plain 15 mm
- 3/8" BSP Male



SCALE 0.250



DIMENSIONS

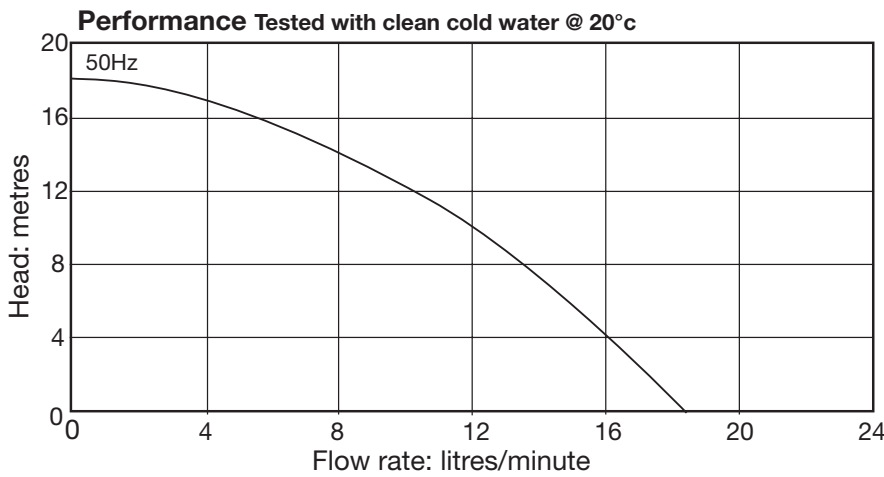
Drawings not to scale
Dimensions in millimetres

SPECIFICATION

Model	Overall height (mm)	Overall length (mm)	Overall width (mm)	Weight (kg)	Max body pressure (bar)	Run-out flow rate (l/min)	Closed valve head (m)	Temp range (degC)	*Max specific gravity	Motor output (watts)
NEMP20/18	139	259	116	3.8	2.5	18.5	18	-20 to +85	1.2	90

*Assuming maximum viscosity of 30cp.

PERFORMANCE



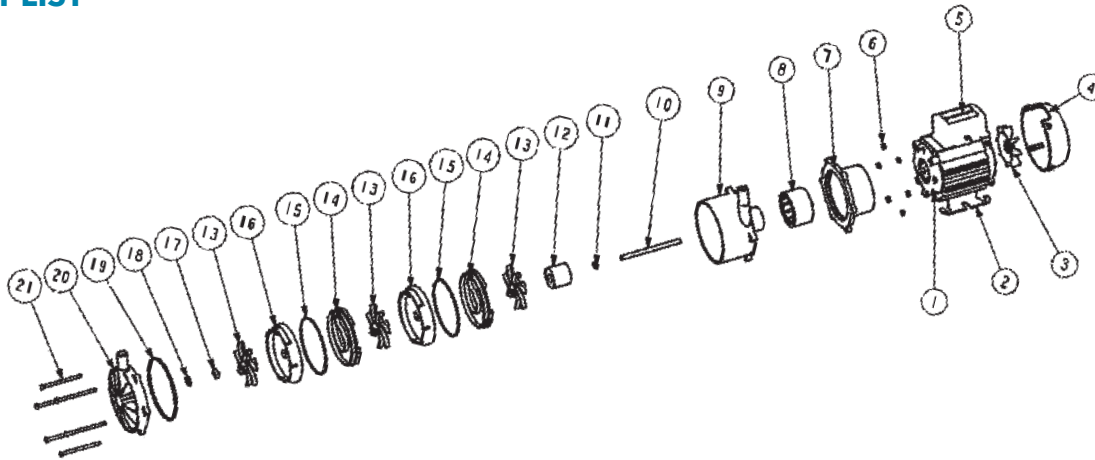
These magnetically coupled pumps are designed for use with clean fluids.

Solids will cause jamming. Abrasives will reduce pump life and invalidate the warranty.

NEMP pumps are not self priming and are not designed to run dry.

The company reserves the right to change specifications.

PART LIST



Item Number	Description	Quantity	Part Number		
1	Motor	1	116843 (230V)	116876 (110V)	
2	Mounting Foot	1	036330		
3	Fan	1	046033		
4	Fan Cowl	1	036085		
5	Terminal Box	1	036078		
6	Nut	6	032105		
7	Adaptor	1	026217		
8	Drive Magnet	1	046319		
9	Pump Body	1	036366 (plain ports)	016374 (threaded ports)	
10	Spindle	1	026205		
11	Thrust Washer	1	026208		
12	Driven Magnet	1	026203		
13	Impeller	3	026238		
14	Inter-Stage	2	016396		
15	O ring	2	022056(EPDM)	022054(Nitrile)	022055(Viton)
16	Stage Element	2	016395		
17	Ceramic Washer	1	026252		
18	Thrust Washer	1	026249		
19	O Ring	1	022059(EPDM)	022057(Nitrile)	022058(Viton)
20	Front Cover	1	016397 (plain ports)	016398 (threaded ports)	
21	Screw	6	022061		



www.xylem.com

UK
Xylem
 Bingley Road, Hoddesdon
 Hertfordshire EN11 0BU
 Tel: +44 (0) 1992 450145
 Fax: +44 (0) 1992 467132

USA
Xylem
 100 Cummings Center Drive
 Suite 535-N, Beverly, MA 01915
 Tel: +1 978 281-0440
 Fax: +1 978 283-2619

ITALY
Xylem
 Via Tommaseo, 6
 20059 Vimercate, Milano
 Tel: +39 039 685 2323
 Fax: +39 039 666 307

GERMANY
Xylem
 Oststrasse 28
 22844 Norderstedt
 Tel: +49-40-53 53 73-0
 Fax: +49-40-53 53 73-11

JAPAN
Xylem
 3-21-10, Shin-Yokohama
 Kohoku-Ku, Yokohama, 222-0033
 Tel: +81-045-475-8906
 Fax: +81-045-477-1162

Warranty: All products of the company are sold, and all services of the company are offered subject to the company's warranty and terms of sale, copies of which will be furnished upon request. Details correct at time of printing. We reserve the right to change specifications without prior notice.